

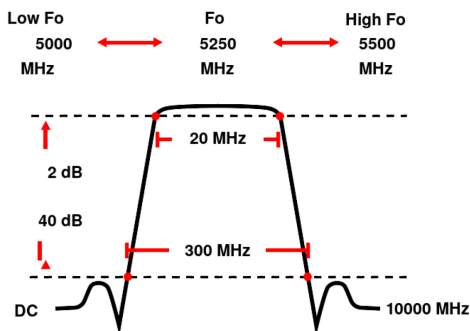


Manually Tunable Band Pass Filter WTBCJV3-5000-5500-20-300-40SSK

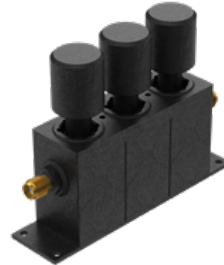
Range 5000 to 5500 MHz Bandwidth 20 MHz Slopes 140 MHz Attenuation 40 dB min.

Passband	20 MHz bandwidth tunable from 5000 to 5500 MHz
Insertion Loss	1.75 dB max. at Fo (2 dB max. at Corners)
Return Loss	14 dB min. (VSWR 1.5:1 max.)
Stopband	DC to Fo - 150 MHz and Fo + 150 to 10000 MHz
Stopband Attenuation	40 dB min.
Operating Temperature	15 °C to 45 °C
Power Handling	will be quoted on request (See our warranty)
Dimensions (L x W x H)	max. 80 x 20 x 35 mm (connectors may protrude)
Approx. Weight	0.19 kg
Mounting Provision	10 mm flanges on both ends with M3 threaded holes
Connector 1	SMA - Female
Connector 2	SMA - Female
Tuning	Tuning with knobs

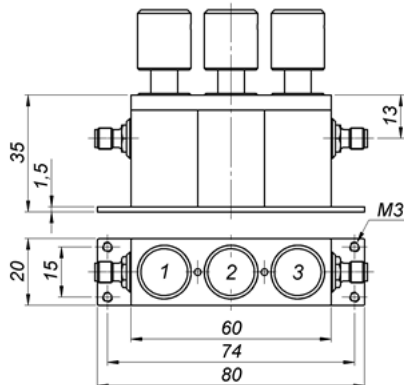
Typical Performance



3 Section Cavity Design



Technical drawing



Connector Options:

SMA - Female
SMA - Male
N - Female
N - Male
BNC - Female
BNC - Male

Unit prices	1-4 pieces	5-9 pieces	10-24 pieces	25-49 pieces	50-99 pieces	100+ pieces
	1690 €	1606 €	1521 €	1437 €	1352 €	1268 €

Delivery Terms

FCA Andechs (free carrier) according to Incoterms 2020. Regarding payment terms and warranty see Terms and Conditions. Delivery time: normally 4 to 6 weeks - depending on quantity ordered and on our work load. **Customer is responsible for observing all applicable export laws in regard to filter application and location of end user.**

Wainwright Instruments GmbH
Graf-Rasso-Street. 1
82346 Andechs
Germany

Contact
Phone: +49 (0) 8152 918230
Telefax: +49 (0) 8152 918255
Email: info@wainwright-filters.com

Legal notes
Managing director: Terence Wainwright
Registering court: Amtsgericht München Abt.B Nr. 58192
VAT Id number: DE 128249711