



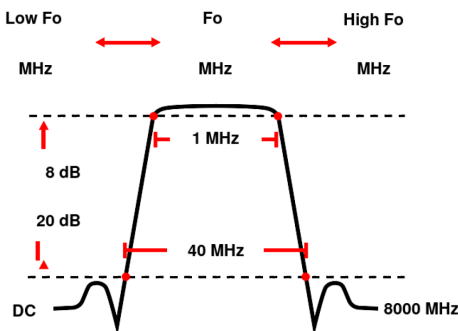
# Manually Tunable Band Pass Filter

## WTBW2-\_\_SSK

Tuning Range \_\_ to \_\_ MHz    Bandwidth 1 MHz    Slopes 19.5 MHz    Attenuation 20 dB min.

<b>Passband</b>	1 MHz bandwidth tunable from to MHz
<b>Insertion Loss</b>	8 dB max. at Fo (8 dB max. at Corners)
<b>Return Loss</b>	12 dB min. (VSWR 1.67:1 max.)
<b>Stopband</b>	DC to Fo - 20 MHz and Fo + 20 to 8000 MHz
<b>Stopband Attenuation</b>	20 dB min.
<b>Operating Temperature</b>	15 °C to 45 °C
<b>Power Handling</b>	will be quoted on request (See our <a href="#">warranty</a> )
<b>Dimensions (L x W x H)</b>	max. 110 x 50 x 24.5 mm (connectors may protrude)
<b>Approx. Weight</b>	0.6 kg
<b>Mounting Provision</b>	M4 threaded holes on all corners of base
<b>Connector 1</b>	SMA - Female
<b>Connector 2</b>	SMA - Female
<b>Tuning</b>	Tuning with knobs

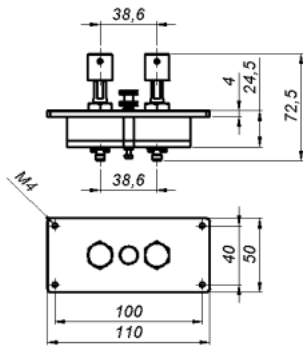
## Typical Performance



## 2 Section Waveguide Design



## Technical drawing



©2019 Wainwright Instruments. All rights reserved.

**Connector Options:**  
SMA - Female

Unit prices	1-4 pieces	5-9 pieces	10-24 pieces	25-49 pieces	50-99 pieces	100+ pieces
	1740 €	1653 €	1566 €	1479 €	1392 €	1305 €

## Delivery Terms

FCA Andechs (free carrier) according to Incoterms 2020. Regarding payment terms and warranty see Terms and Conditions. Delivery time: normally 4 to 6 weeks - depending on quantity ordered and on our work load. **Customer is responsible for observing all applicable export laws in regard to filter application and location of end user.**

**Wainwright Instruments GmbH**  
Graf-Rasso-Street. 1  
82346 Andechs  
Germany

**Contact**  
Phone: +49 (0) 8152 918230  
Telefax: +49 (0) 8152 918255  
Email: [info@wainwright-filters.com](mailto:info@wainwright-filters.com)

**Legal notes**  
Managing director: Terence Wainwright  
Registering court: Amtsgericht München Abt.B Nr. 58192  
VAT Id number: DE 128249711