



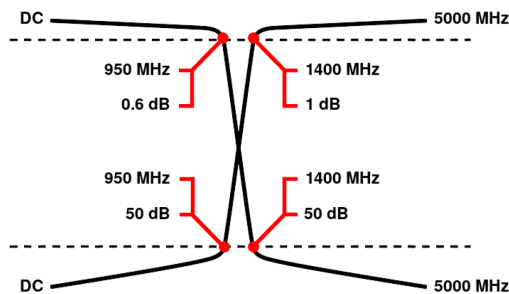
Diplexer/Duplexer (LP/HP)

WDK6+5-DC-950/1400-5000-50S3

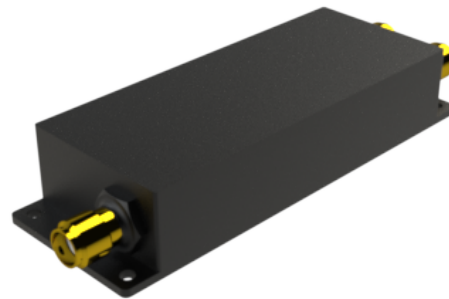
Passband 1: DC to 950 MHz Passband 2: 1400 to 5000 MHz

	Band 1 (Low Pass)	Band 2 (High Pass)
Passbands	DC to 950 MHz	1400 to 5000 MHz
Insertion Loss	0.6 dB max.	1 dB max.
Return Loss	17 dB min.	15 dB min.
Stopbands	1400 to 5000 MHz	DC to 950 MHz
Stopband Attenuation	50 dB min.	50 dB min.
Operating Temperature	15 °C to 45 °C	
Power Handling	max. 10 W CW into a 2:1 VSWR (See our warranty)	
Dimensions (L x W x H)	max. 71 x 25 x 13.2 mm (connectors may protrude)	
Approx. Weight	0.1 kg	
Mounting Provision	5.5 mm flanges on both ends	
Connector Common	SMA - Female	
Connector 1	SMA - Female	
Connector 2	SMA - Female	

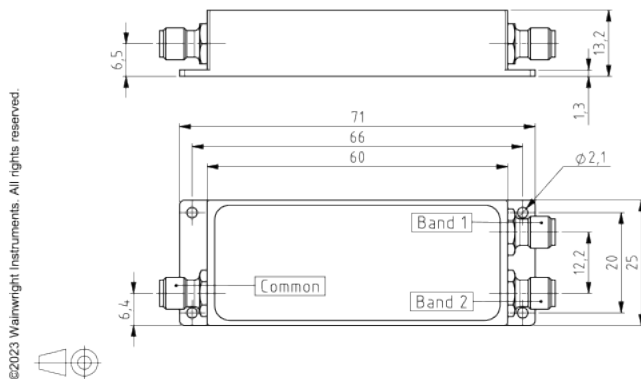
Typical Performance



6+5 Section LC Design



Technical drawing



Connector Options:
SMA - Female

Unit prices	1-4 pieces	5-9 pieces	10-24 pieces	25-49 pieces	50-99 pieces	100+ pieces
	1050 €	998 €	945 €	893 €	840 €	788 €

Delivery Terms

FCA Andechs (free carrier) according to Incoterms 2020. Regarding payment terms and warranty see Terms and Conditions. Delivery time: normally 4 to 6 weeks - depending on quantity ordered and on our work load. **Customer is responsible for observing all applicable export laws in regard to filter application and location of end user.**

Wainwright Instruments GmbH
Graf-Rasso-Street. 1
82346 Andechs
Germany

Contact
Phone: +49 (0) 8152 918230
Telefax: +49 (0) 8152 918255
Email: info@wainwright-filters.com

Legal notes
Managing director: Terence Wainwright
Registering court: Amtsgericht München Abt.B Nr. 58192
VAT Id number: DE 128249711