



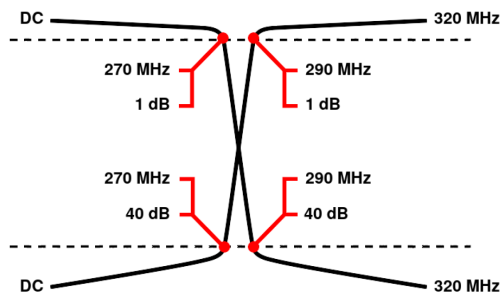
Diplexer/Duplexer (LP/HP)

WDGE5+5-DC-270/290-320-40S3

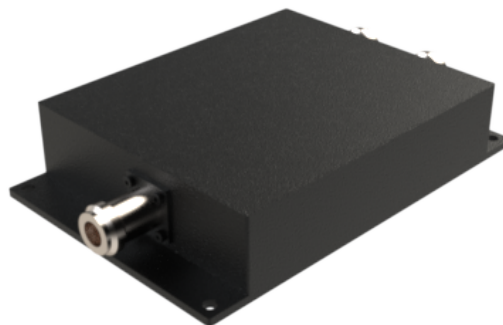
Passband 1: DC to 270 MHz Passband 2: 290 to 320 MHz

	Band 1 (Low Pass)	Band 2 (High Pass)
Passbands	DC to 270 MHz	290 to 320 MHz
Insertion Loss	1 dB max.	1 dB max.
Return Loss	14 dB min.	14 dB min.
Stopbands	290 to 320 MHz	DC to 270 MHz
Stopband Attenuation	40 dB min.	40 dB min.
Operating Temperature	15 °C to 45 °C	
Power Handling	max. 80 W CW into a 2:1 VSWR (See our warranty)	
Dimensions (L x W x H)	max. 150 x 100 x 30 mm (connectors may protrude)	
Approx. Weight	1 kg	
Mounting Provision	10 mm flanges on both ends	
Connector Common	SMA - Female	
Connector 1	SMA - Female	
Connector 2	SMA - Female	

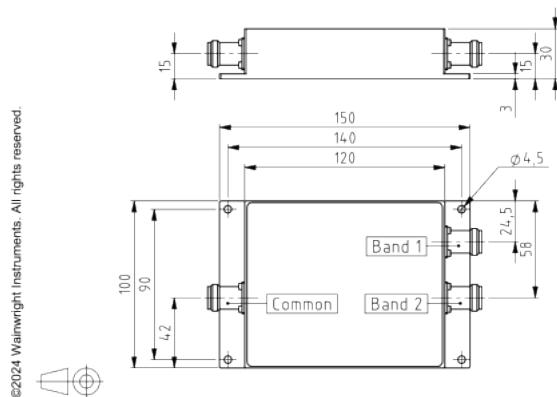
Typical Performance



5+5 Section Cauer Design



Technical drawing



Connector Options:

SMA - Female
N - Female

Unit prices

1-4 pieces
3380 €

5-9 pieces
3211 €

10-24 pieces
3042 €

25-49 pieces
2873 €

50-99 pieces
2704 €

100+ pieces
2535 €

Delivery Terms

FCA Andechs (free carrier) according to Incoterms 2020. Regarding payment terms and warranty see Terms and Conditions. Delivery time: normally 4 to 6 weeks - depending on quantity ordered and on our work load. **Customer is responsible for observing all applicable export laws in regard to filter application and location of end user.**

Wainwright Instruments GmbH
Graf-Rasso-Street. 1
82346 Andechs
Germany

Contact
Phone: +49 (0) 8152 918230
Telefax: +49 (0) 8152 918255
Email: info@wainwright-filters.com

Legal notes
Managing director: Terence Wainwright
Registering court: Amtsgericht München Abt.B Nr. 58192
VAT Id number: DE 128249711