



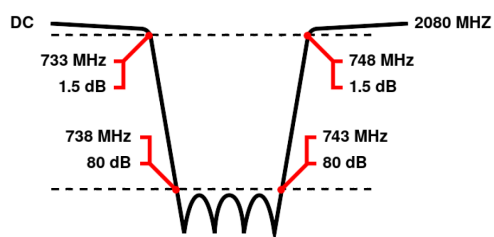
# Band Reject / Notch Filter

## WRCT8-733-738-743-748-80SS

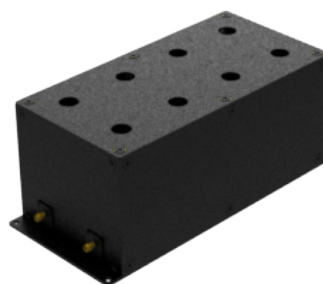
Stopband 738 to 743 MHz    Slopes 5 MHz    Bandwidth 5 MHz    Attenuation 80 dB min.

<b>Passband</b>	DC to 733 MHz and 748 to 2080 MHz
<b>Insertion Loss</b>	0.6 dB max. (1.5 dB max. at Corners)
<b>Return Loss</b>	15 dB min. (VSWR 1.43:1 max.)
<b>Stopband</b>	740.5 (Fo) $\pm$ 2.5 MHz = 738 to 743 MHz
<b>Stopband Attenuation</b>	80 dB min.
<b>Operating Temperature</b>	15 °C to 45 °C
<b>Power Handling</b>	will be quoted on request (See our <a href="#">warranty</a> )
<b>Dimensions (L x W x H)</b>	max. 270 x 120 x 108 mm (connectors may protrude)
<b>Approx. Weight</b>	4.8 kg
<b>Mounting Provision</b>	15 mm flanges on both ends with 5.2 mm holes
<b>Connector 1</b>	SMA - Female
<b>Connector 2</b>	SMA - Female

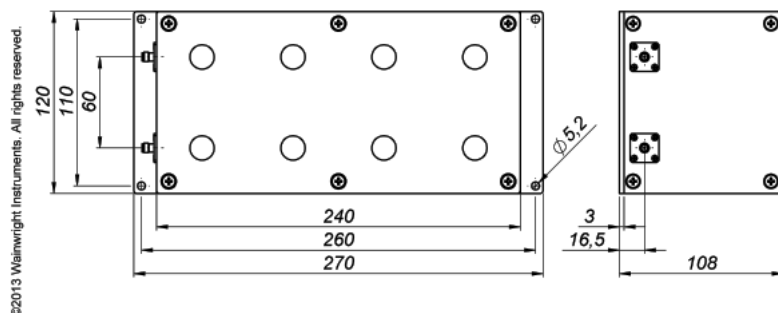
## Typical Performance



## 8 Section Cavity Design



## Technical drawing



### Connector Options:

SMA - Female  
SMA - Male  
N - Female  
N - Male  
BNC - Female  
BNC - Male

## Unit prices

1-4 pieces  
2290 €

5-9 pieces  
2176 €

10-24 pieces  
2061 €

25-49 pieces  
1947 €

50-99 pieces  
1832 €

100+ pieces  
1718 €

## Delivery Terms

FCA Andechs (free carrier) according to Incoterms 2020. Regarding payment terms and warranty see Terms and Conditions. Delivery time: normally 4 to 6 weeks - depending on quantity ordered and on our work load. **Customer is responsible for observing all applicable export laws in regard to filter application and location of end user.**

**Wainwright Instruments GmbH**  
Graf-Rasso-Street. 1  
82346 Andechs  
Germany

**Contact**  
Phone: +49 (0) 8152 918230  
Telefax: +49 (0) 8152 918255  
Email: [info@wainwright-filters.com](mailto:info@wainwright-filters.com)

**Legal notes**  
Managing director: Terence Wainwright  
Registering court: Amtsgericht München Abt.B Nr. 58192  
VAT Id number: DE 128249711